



SINGLE HEATER INFRARED HEAT LAMP UNIT

IMPORTANT INSTALLATION AND WARRANTY INSTRUCTIONS

Thank you and congratulations on your purchase of the MARTEC Bathroom Heater. Please read these instructions carefully before installing and using the product. Keep the instructions handy for future reference. Electrical wiring must only be done by a licensed electrician and a "Certificate of Compliance" must be issued upon completion of the installation.

LOCATION

The unit must be located and installed in accordance with AS/NZS 3000 and local building codes relating to damp situations. The unit can be installed in any room that requires direct radiant heating such as bathrooms, ensuite, laundries, etc. The unit can be installed on a flat ceiling with a minimum height of 2 metres from the floor. The unit must also be installed at least 400mm away from the walls. Ensure adequate inlets exist through windows, vents or under the door for airflow.

POWER

230V/24V a.c., 50Hz electrical supply is required. The unit can be connected to a lighting or power circuit if loading permits. All electrical work must be carried out in accordance with AS/NZS3000 or latest edition thereof, and local building codes and regulations. Ensure that supply power is isolated before commencing installation.

MOUNTING

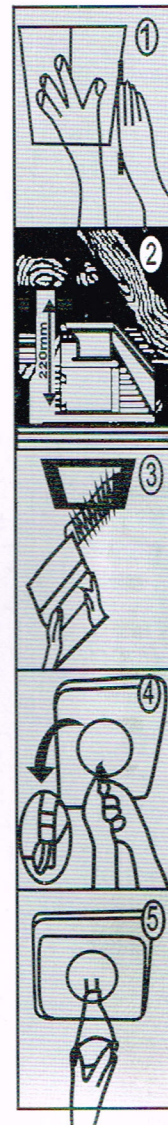
1. The unit may be mounted either between joists using the inbuilt clip fasteners or against a joist using a screw through the flange plate. Use this card in its open state as a template. Place in the required location and mark out the hole cutting size. Hole size is 166 x 166mm.

2. Before commencing cutting ensure that the area behind the intended location is clear of all cables, pipes and joists. Once clear, cut out the section along the previously marked lines.

3. Remove the heat lamp from the unit. Unclip the internal fascia-retaining springs and remove the fascia.

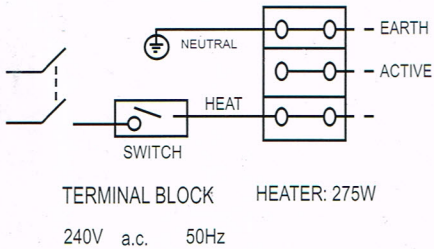
4. Push the 2 side clip fasteners inward before inserting the unit into the square hole so that the body can pass through the hole without damaging the plaster. Hold the body of the heater and push the 2 clip fasteners outward and then tighten the screws. Ensure that the unit is held securely in place by the clip fasteners. If required, additional screws can be used to aid holding the unit in the ceiling. Screw holes are provided in the flange for this purpose.

5. Replace the fascia and then screw in the heat lamp into the lamp holder through the hole provided in the Fascia. The globe should be screwed up firmly to ensure a good electrical contact but don't over tighten.



ELECTRICAL

1. Clip the switch into the backing plate in the desired order and install the plate on the wall (No Switch is Supplied).
2. Connect the wiring to the switch as shown in the below electrical diagram.
3. Remove the terminal cover on the heater unit and wire according to the label adjacent to the terminal block. Make sure all cables are securely connected and refit the terminal cover.
4. Clean the fascia and globe with a soft moist cloth. Turn on power and check the switch operation.



CARE AND MAINTENANCE

Lamps must be cool before cleaning. To clean bulbs and surrounds wipe with a cloth dampened with detergent or liquid glass cleaner.

REPLACEMENT GLOBES

Preferred high quality lamps: MARTEC Heat lamp 275 (MRL275W).
HEAT LAMP: The heat lamp must only be replaced with a 275 watt globe.



BATHROOM HEATER WARRANTY CARD

This unit must be installed by a qualified licensed electrician.

Every MARTEC single heater light only is thoroughly inspected and tested before being released for sale. In addition to any warranties or conditions implied by applicable Statute or Regulation, MARTEC warrants all of its bathroom heaters against defective workmanship and faulty materials for 3 years from the original date of purchase either by way of replacement warranty or in home warranty (check product packing for warranty offered). MARTEC undertakes, at its option, to repair or replace, free of charge, each product or part thereof subject to the below warranty conditions:

- 1) The relevant part has not been modified, subjected to misuse, neglect, or been involved in an accident.
- 2) The repairs are not required as a result of normal wear and tear.
- 3) The product was installed by a licensed electrical contractor in accordance with this instruction manual.
- 4) No solid state speed control device has been used with the appliance.
- 5) A copy of the original receipt or purchase is presented. A copy of the licensed electrician receipt is presented or certificate of compliance.
- 6) Globes supplied are not covered by this warranty.

MARTEC cannot be held responsible for any repair other than those carried out by it or one of its Authorized Service Agents. Please keep this warranty card in safe place. This card must be produced in the event of service being required.

MODEL(SKU) NUMBER: _____
DATE OF PURCHASE: _____
RETAILER: _____
RECEIPT NUMBER: _____
INSTALLED BY: A copy of the licensed electrician receipt is presented
LICENSE#: _____ PH: _____
DESCRIPTION OF FAULT: _____

ACCQ Required Statement

Our goods come with guarantees that cannot be excluded under the Australian Consumer Law. You are entitled to Martec replacing the product in home with parts and labour for a major failure. You are also entitled to have the goods repaired or replaced if the goods fail to be of acceptable quality and the failure does not amount to a major failure. Martec offers an in home warranty that includes parts and labour so the end consumer is not out of pocket.

WARRANTY CUSTOMER SERVICE HOTLINE:(PHONE) 02 8778 7500
3 Year in home CUSTOMER SERVICE HOTLINE: (FAX) 02 8778 7555

We reserve the rights to revise this instruction without any prior notice.